



# ICEM 2010 EMS Leaders and Medical Directors Workshop - 7 June to 8 June 2010

Presented by: *International Federation  
of Emergency Medicine*

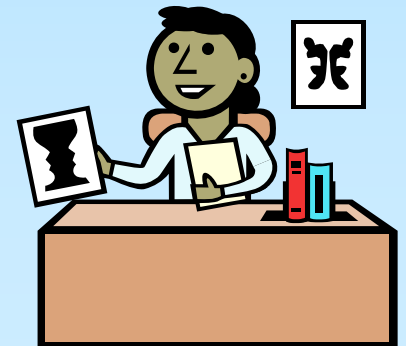
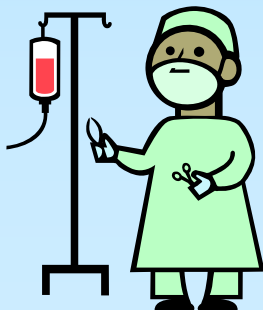


Organised by: *Society for Emergency  
Medicine, Singapore*



# Who is the Course Meant for?

The course is meant for physicians, senior paramedics, nurses, administrators and policy makers who are involved in provision of pre-hospital emergency care and emergency medical services (EMS).



# What can you Expect from the Course?

Featuring an international faculty of EMS medical experts, the course will give insights into medical oversight and EMS operations including :

- Medical Direction
- Essential Elements of EMS
- EMS Dispatch Fundamentals
- EMS Training and Education
- Case Studies in Medical Systems
- EMS Finance Fundamentals
- Data and Quality Improvement Concepts
- Measuring EMS System Function
- Fundamentals of Disaster Preparedness
- EMS Research
- Practical Issues in Medical Direction



# Who are the Faculty Members?

Jerry Overton

United States

Henry Wang

United States

Russell MacDonald

Canada

Garry Wilkes

Australia

Darren Walter

United Kingdom

Sang Do Shin

Korea

Chi-Biu Lo

Hong Kong

Matthew Ma

Taiwan

Marcus Ong

Singapore

Benjamin Leong

Singapore



# A Look at the Program - Day 1

## ICEM 2010 EMS Leaders and Medical Directors Workshop

Day 1-7 June 2010		
Time		Speaker
0800h	<b>Welcome and Admin</b>	Jerry Overton/Marcus Ong
0830h	<b>EMS Medical Direction: An Overview</b> <ul style="list-style-type: none"> <li>• What is Medical Direction</li> <li>• Why do we need Medical Direction?</li> <li>• Describe the role of the EMS Medical Director in establishing the standard and philosophy of care</li> <li>• Discuss the role of the EMS Medical Director in credentialing providers</li> <li>• Direct vs Indirect Oversight</li> <li>• Describe the role of the EMS Medical Director in system oversight</li> </ul>	Marcus Ong
0930h	<b>Essential Elements of EMS</b> <ul style="list-style-type: none"> <li>• Compare and contrast EMS Systems</li> <li>• Hospital based, Fire EMS and Independent service systems</li> <li>• Physician vs Nurse vs Paramedic/EMT systems</li> <li>• Describe the relationship of the "system" to its environment</li> <li>• List the important structural attributes associated with EMS system design</li> <li>• Discuss the role of the EMS Medical Director in system design and maintenance</li> </ul>	Chi-Biu Lo
1030h	<b>Break</b>	
1045h	<b>EMS Dispatch Fundamentals</b> <ul style="list-style-type: none"> <li>• Describe EMS Dispatch components</li> <li>• Identify steps involved in EMS dispatch</li> <li>• Elements of Call prioritization, Call allocation, Call dispatching and Pre-arrival instructions</li> <li>• Quality and audit in dispatch</li> <li>• Describe EMS Medical Directors involvement in EMS dispatch</li> </ul>	Garry Wilkes
1200h	<b>Lunch</b>	
1300h	<b>EMS Training and Education</b> <ul style="list-style-type: none"> <li>• Physician vs Nurse vs Paramedic/EMT systems</li> <li>• Level of Providers and Skill sets</li> <li>• Discuss the evolution of EMS training systems, syllabus and accreditation</li> <li>• EMS Medical Protocols</li> <li>• Continuing EMS Education and Re-certification</li> <li>• Maintaining quality in training</li> <li>• Describe the role of the EMS Medical Director in EMS education</li> </ul>	Darren Walter
1430h	<b>Case Studies in Medical Systems</b> <ul style="list-style-type: none"> <li>• Americas</li> <li>• Europe</li> <li>• Australia</li> <li>• Asia</li> </ul>	Presentation of 5-6 selected National/City EMS systems followed by small group discussion Facilitator: Benjamin Leong Benjamin Leong- Asian EMS systems  Darren Walter- Europe Henry Wang- USA Sang Do-Shin- Korea Russell MacDonald-Canada Garry Wilkes-Australia
1700h	<b>Case Review Comments</b>	
	<b>SOCIAL EVENT</b>	

# A Look at the Program - Day 2

## ICEM 2010 EMS Leaders and Medical Directors Workshop

Day 2-8 June 2010		
Time		Speaker
0800h	<b>EMS Finance Fundamentals</b> <ul style="list-style-type: none"> <li>Identify and define financial terms that are specific to Emergency Medical Services and understand their application</li> <li>Provide an overview of the concept of economic efficiency and its importance to the overall operation of an EMS system and how it impacts the delivery of patient care</li> <li>Become familiar with formulas and calculations used by administrators to estimate costs and revenue needs</li> <li>Understand the different sources of revenues and the challenges of EMS system funding</li> </ul>	Jerry Overton
0900h	<b>Data and QI Concepts</b> <ul style="list-style-type: none"> <li>Describe the basic components of an EMS information system.</li> <li>Compare and contrast medical versus industrial philosophies of quality management</li> <li>Identify critical elements for successful implementation of a quality management program</li> <li>Define and differentiate common quality improvement terms and strategies</li> <li>Discuss strategies for developing a QI program</li> <li>List common problems encountered in QI programs, and discuss ways to overcome them</li> </ul>	Matthew Ma
1000h	<b>Measuring EMS System Function: Performance Measures &amp; Benchmarking</b> <ul style="list-style-type: none"> <li>Define "Benchmarking" and develop a working knowledge of the data points needed prior to initiating a benchmarking project</li> <li>Provide an overview of a process that can be used to compare performance indicators with other EMS systems</li> <li>Review examples of and results from clinical and economic recent EMS Benchmarking studies</li> </ul>	Russell MacDonald
1100h	<b>Fundamentals of Disaster Preparedness</b> <ul style="list-style-type: none"> <li>Discuss the role of the EMS Medical Director in ensuring an effective and well-integrated disaster response.</li> <li>Differentiate the three areas of disaster response: activation, implementation and recovery.</li> <li>Describe the elements of Incident Management System (IMS)</li> </ul>	Sang Do Shin
1200h	Lunch	
1300h	<b>EMS Research and Research Updates</b> <ul style="list-style-type: none"> <li>Discuss the unique considerations impacting research in the prehospital setting:</li> <li>Describe state of the art research in EMS therapeutics including:               <ul style="list-style-type: none"> <li>Airway management &amp; monitoring</li> <li>Cardiac arrest care &amp; monitoring</li> <li>Trauma care</li> </ul> </li> </ul>	Henry Wang
1500h	<b>Practical Issues in Medical Direction</b> <ul style="list-style-type: none"> <li>Ambulance diversion</li> <li>Refusal of medical assistance</li> <li>Handling medicolegal cases</li> <li>Handling the media</li> <li>EMS and the community</li> <li>Case Studies in Medical Direction</li> </ul>	<b>SMALL GROUPS</b> Sang Do Shin/Matthew Ma Henry Wang Garry Wilkes Jerry Overton Russell MacDonald Darren Walter/Chi-Biu Lo
1700h	Course Review, Comments and Closing	

# To Register...

<http://www.icem2010.org/>

